

**TORO®**

Count on it.

# TORO® RT600 Riding Trencher



**CONSTANT PERFORMANCE**



## Introducing the New Toro® RT600 Riding Trencher.

Using Toro-exclusive trencher drive technology - the only trencher to use a flywheel, torsion shaft, and planetary gear box reduction system - the RT600 delivers smooth, consistent performance in the toughest digging conditions.

Since 1914, The Toro Company has built its reputation on providing quality products and service to the professionals who create, maintain and preserve outdoor environments. Today, professionals and contractors around the world count on Toro products to stand up to the demands of heavy use, season after season.

As a leading manufacturer of turf maintenance equipment, precision irrigation solutions, concrete and compaction tools, and equipment for trenching, plowing, excavating and horizontal directional drilling, Toro products are aimed at allowing you to do your job more efficiently and profitably.

We value the trust professionals place in our people and products to meet their unique needs and deliver superior results. That's why the Toro RT600 and every product that carries the Toro name also carries our commitment to quality and product excellence.

**OPTIONAL BACKHOE.**  
Front mounted heavy duty backhoe, with a digging force of 6,700 lbs (3,039 kg), a depth up to 7'5" (229 cm), and a reach of 11'4" (345 cm), makes digging fast and efficient. True over-center backhoe design ensures consistent machine stability when backhoe is in transport mode.



**POWER YOU CAN COUNT ON.**  
The RT600 is powered by a Cummins® B3.3 4-cylinder, liquid cooled, diesel engine - trusted for its power, reliability, and lifespan.

**PRODUCTIVE PLOWING.**  
Optional P85 Vibratory Plow is capable of installing pipe or wire up to 30" (76 cm) deep.

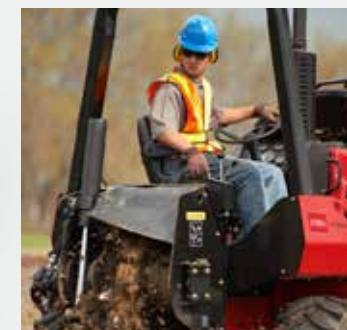


**EASY BACKFILLING.**  
Six-way heavy-duty backfill blade is standard. The float position allows blade to smoothly follow the ground's contours.

**HIGHLY MANEUVERABLE.**  
Standard four-wheel steering with planetary axles using constant velocity u-joints and a tight turning radius makes getting into tight spaces even easier.

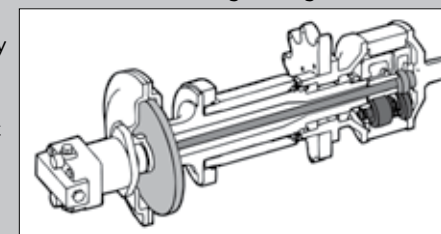
**DUAL HYDROSTATIC SYSTEM.**  
Inline hydrostatic ground and attachment drive system provide optimal performance for trenching and plowing.

**MAXIMUM OPERATOR COMFORT FOR MAXIMUM PRODUCTIVITY.**  
Ergonomic controls at your fingertips, full range of clear analogue gauges, and a pivoting suspension operator's seat ensures operator comfort and jobsite visibility for all-day productivity.



### EXCLUSIVE TORO PLANETARY GEAR REDUCTION TRENCHER DRIVE

The planetary trencher drive uses a flywheel, torsion shaft and planetary gearset for smooth operation and longer life. The flywheel keeps the chain line from stalling in tough soil conditions and minimizes pressure spikes in the hydraulic system. Between the flywheel and the planetary gearset, the torsion shaft serves as a spring to absorb shock loads from the trencher driveline. The planetary gearset multiplies the hydrostatic motor torque for unsurpassed digging power. These features all combine to deliver smooth, consistent, and powerful trenching, even as ground conditions change.



# TORO® RT600 RIDING TRENCHER SPECIFICATIONS

## DIMENSIONS (Base Unit, Tires, Backfill Blade)

Length	128.3" (326 cm)	Height	96" (244 cm)
Width	72" (185 cm)	Weight	6,350 lbs (2,880 kg)
Ground Clearance	7.4" (18 cm)		

## POWER

Engine	Cummins® B3.3
Manufacturer's Gross Power Rating	65 hp (48 kW)
Fuel Type	Diesel
Fuel Tank Capacity	20 gal (75 L)
Cooling	Liquid
Cooling System Capacity	4.5 gal (17 L)
Cylinders	4
Displacement	199 cubic inches (3.3 L)
Bore	3.74" (95 mm)
Stroke	4.53" (115 mm)
Rated Speed	2,600 rpm
Battery	12-volt, 950 cca

## HYDRAULICS

Hydraulic Tank Capacity	19 gal (72 L)
Hydraulic System Capacity	26 gal (98 L)
Ground Drive Pump Capacity (Maximum)	35.6 gpm (134.8 L/m)
Ground Drive Pump Relief Pressure	5,000 psi (345 Bar)
Attachment Pump Capacity (Maximum)	35.6 gpm (134.8 L/m)
Auxiliary Pump Capacity	6.5 gpm per port (25 L/m) (2 ports on pump)
Auxiliary Pump Relief	2,500 psi

## TRACTION

Transmission	Inline hydrostatic, Infinitely variable
Axle Type (Front/Rear)	Steerable Planetary
Tire Size	31 x 15.50-15, 8 ply
Maximum Transport Speed (Forward / Reverse)	6.2 mph / 4.6 mph (10.8 km/h / 7.4 km/h)
Maximum Creep Speed	1.4 mph (2.3 km/h)

# TORO® RT600 RIDING TRENCHER ATTACHMENTS SPECIFICATIONS

## BACKFILL BLADE

Width	72" (183 cm)
Height	14.3" (36 cm)
Lift Height (Below Ground)	14.4" (37 cm)
Blade Drop (Below Ground)	9" (23 cm)
Maximum Swing Angle	35°

## HD125 BACKHOE

Length (Minimum Transport)	26.4" (67.1 cm)
Height (Transport)	112" (285 cm)
Weight (with 18" Bucket)	2130 lbs (966 kg)
Maximum Reach	135.6" (344 cm)
Maximum Digging Depth	87.3" (222 cm)

## HEAVY DUTY TRENCHER

Length (Minimum, Transport, 4' Boom)	74.4" (189 cm)
Height (Transport)	96" (244 cm)
Weight	1950 lbs (885 kg)
Digging Chain Speed	620 ft/min (18 m/min)
Maximum Depth	60" (152 cm)
Width (Maximum / Minimum)	12" / 6" (30 cm / 15 cm)

## P85 VIBRATORY PLOW

Length (Minimum, Transport)	69.3" (176 cm)
Height (Transport)	112" (285 cm)
Weight	1870 lbs (848 kg)
Maximum Depth	30" (76 cm) (Depending on ground conditions)

Products depicted in this literature are for demonstration purposes only. Actual products offered for sale may vary in use, design, required attachments and safety features. We reserve the right to improve our products and make changes in specifications, designs and standard equipment without notice and without incurring obligation. See your dealer for details on all of our warranties.

